

SDAD1 Antibody (C-term)
Purified Rabbit Polyclonal Antibody (Pab)
Catalog # AP20962c**Specification**

SDAD1 Antibody (C-term) - Product Information

Application	WB,E
Primary Accession	Q9NVU7
Other Accession	Q5XIQ5 , Q80UZ2 , Q6NV26 , A5D7C2
Reactivity	Human, Mouse
Predicted	Bovine, Zebrafish, Rat
Host	Rabbit
Clonality	Polyclonal
Isotype	Rabbit IgG
Calculated MW	79871

SDAD1 Antibody (C-term) - Additional Information**Gene ID** 55153**Other Names**

Protein SDA1 homolog, Nucleolar protein 130, SDA1 domain-containing protein 1, hSDA, SDAD1, NUC130

Target/Specificity

This SDAD1 antibody is generated from a rabbit immunized with a KLH conjugated synthetic peptide between 596-629 amino acids from the C-terminal region of human SDAD1.

Dilution

WB~~1:1000

E~~Use at an assay dependent concentration.

Format

Purified polyclonal antibody supplied in PBS with 0.09% (W/V) sodium azide. This antibody is purified through a protein A column, followed by peptide affinity purification.

Storage

Maintain refrigerated at 2-8°C for up to 2 weeks. For long term storage store at -20°C in small aliquots to prevent freeze-thaw cycles.

Precautions

SDAD1 Antibody (C-term) is for research use only and not for use in diagnostic or therapeutic procedures.

SDAD1 Antibody (C-term) - Protein Information**Name** SDAD1

Synonyms NUC130

Function Required for 60S pre-ribosomal subunits export to the cytoplasm.

Cellular Location

Nucleus, nucleolus

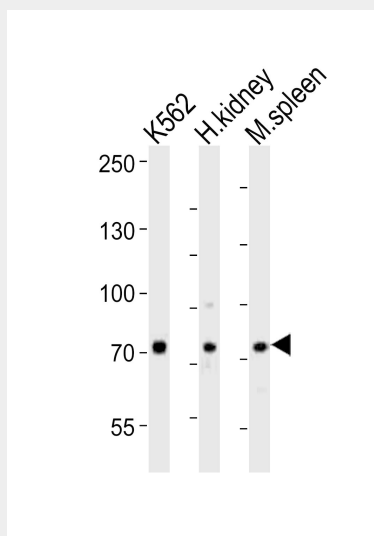
Tissue Location

Highly expressed in testis, kidney, spleen, brain and fetal tissues. Also expressed at lower level in heart, lung, liver, small intestine, ovary, uterus, mammary gland and placenta

SDAD1 Antibody (C-term) - Protocols

Provided below are standard protocols that you may find useful for product applications.

- [Western Blot](#)
- [Blocking Peptides](#)
- [Dot Blot](#)
- [Immunohistochemistry](#)
- [Immunofluorescence](#)
- [Immunoprecipitation](#)
- [Flow Cytometry](#)
- [Cell Culture](#)

SDAD1 Antibody (C-term) - Images

Western blot analysis of lysates from K562 cell line, human kidney, mouse spleen tissue (from left to right), using SDAD1 Antibody (C-term)(Cat. #AP20962c). AP20962c was diluted at 1:1000 at each lane. A goat anti-rabbit IgG H&L(HRP) at 1:10000 dilution was used as the secondary antibody. Lysates at 20ug per lane.

SDAD1 Antibody (C-term) - Background

Required for 60S pre-ribosomal subunits export to the cytoplasm (By similarity).

SDAD1 Antibody (C-term) - References

Bechtel S.,et al.BMC Genomics 8:399-399(2007).
Hillier L.W.,et al.Nature 434:724-731(2005).
Ota T.,et al.Nat. Genet. 36:40-45(2004).
Andersen J.S.,et al.Curr. Biol. 12:1-11(2002).
Babbio F.,et al.Cell Cycle 3:486-490(2004).